

Product Overview

96/384 Channel Pipettors

Specifications

CyBi®-Well



Provides precise pipetting in 96, 384 and 1536 well formats. Available with a variety of stackers and accessories to customize a flexible and reliable pipetting system for liquid handling applications.

Channels, heads:	96/25 μL and 384/25 μL shallow well (SW) 96/25 μL and 96/250 μL deep well (DW)
Volume range:	200 nL – 250 μL /Wet and dry pipetting
Precision*: (% CV)	250 μL – 10-25 μL $\leq 2\%$; 25-250 μL $\leq 1\%$ 384 or 96/25 μL : 2-5 μL $\leq 2\%$; 5-25 μL $\leq 1\%$
Dimensions (w/h/d):	1300 x 501-542 x 260 mm (SW or DW respectively)
Weight:	approx. 18,5 kg (SW)

CyBi®-Well vario



Combines the high performance and flexible pipetting platform of the CyBi®-Well with a series of exchangeable heads. Heads are available in 96 and 384 tip configurations and a variety of volume ranges. Head exchanges are completed easily in just minutes without recalibration.

Channels, heads:	6 interchangeable 96 or 384 channel heads for disposable or ceramic tips
Volume range:	25 nL – 250 μL /Wet pipetting 200 nL – 250 μL /Dry pipetting
Precision*: (% CV)	96/250 μL – 10-25 μL $\leq 2\%$; 25-250 μL $\leq 1\%$; 384/40 μL /25 μL – 2-5 μL $\leq 2\%$; 5-25 μL $\leq 1\%$ 96 or 384/2.5 μL – 0.1-0.25 μL $\leq 7\%$; 0.25-0.5 μL $\leq 5\%$
Dimensions (w/h/d):	1300 x 795 x 370 mm (4-place carriage) 1300 x 795 x 370 mm (5-place carriage)
Weight:	31 kg basic unit; 13,6 kg pipetting head

CyBi®-HummingWell



Parallel pipettor with non-contact dispensing in the ultra-low volume range. From 25 nL to 1000 nL into all established plate formats. Enables rapid compound transfers in the sub-microliter range. Suitable for compound or sample transfer into dry microplates.

Pipetting cassettes:	96 or 384
Volume range:	25, 50, 100, 250, 500, 750, or 1000 nL
Precision*: (% CV)	<10% for all volumes; <1.5% can be expected for 250 nL, <2.5% for 100 nL
Dimensions (w/h/d):	253 x 625 x 282 mm (Base Unit)
Weight:	22 kg (Base Unit)

CyBi®-Disk



The 10-position deck of the CyBi®-Disk is ideally suited to perform complex liquid handling protocols where several reagents are needed. The deck can be upgraded with a second pipetting head and is accessible with a rotating arm for integrations.

Channels, heads:	CyBi®-Disk, fixed heads: 96/25 μL shallow well, 96/250 μL deep well, 384/25 μL shallow well CyBi®-Disk vario: 6 different interchangeable heads available
Volume range:	see CyBi®-Well vario and CyBi®-Well
Precision*: (% CV)	see CyBi®-Well vario and CyBi®-Well
Dimensions (w/h/d):	900 x 501-795 x 700 mm
Weight:	approx. 29 kg

8 Channel Pipettors

Specifications



CyBi®-DiluS^{pro}

The 8-channel pipettor is suitable for processing microplates column by column for applications such as serial dilutions, assay transfers and more. The CyBi®-DiluS^{pro} can be used standalone or integrated into a larger system for more complex applications.

Pipetting channels:	8 disposable tips
Volume range:	0.5 µL – 250 µL
Precision*:	CyBi®-DiluS ^{pro} -Tips 250 µL: 10-250 µL ≤ 2% CyBi®-DiluS ^{pro} -Tips 50 µL: 5-50 µL ≤ 2% CyBi®-DiluS ^{pro} -Tips 5 µL: 0.5-5 µL ≤ 5%
Dimensions (w/h/d):	1.350 x 650 x 400 mm (linear 4 place) 1.650 x 650 x 400 mm (linear 5 place) 700 x 650 x 950 mm (circular)
Weight:	40 kg



CyBi®-RoboSpense

A versatile pipettor with 8 independent liquid channels and a free configurable deck that can be adapted for almost any application. An optional second arm with a robotic microplate handler enables interfacing to other functional units such as heating and cooling devices, shakers, barcode reading devices, microplate readers, incubators and parallel pipettors to expand the system's capabilities.

Pipetting channels:	4 or 8 channels; disposable tips, washable probes or any combination
Tip sizes:	10 µL, 50 µL, 300 µL, 1100 µL
Volume range:	Steel probes: 2 µL - 1000 µL Disposable tips: 1 µL - 1000 µL
Precision*:	1 µL < 10% 100 µL < 2%
Dimensions (w/h/d):	1.300 x 1200 x 760 mm
Weight:	130 kg

Dispensers

Specifications



CyBi®-NanoJet

Flexible, non-contact, low-volume bulk dispenser. From 50 nL to 20 µL for all plate formats up to 1536 wells. Offers flexible, fast and precise dispensing from up to 16 individual channels. Can work as stand-alone assay workstation or as part of an HTS-Workstation.

Dispensing channels:	up to 16 different reagents
Volume range:	50 nL to 20 µL (multiple dosing is possible)
Precision*:	volume < 500 nL CV ≤ 5% per channel volume > 500 nL CV ≤ 4% per channel
Dimensions (w/h/d):	430 x 746 x 430 mm (Base Unit)
Weight:	70 kg (Base Unit)



CyBi®-Drop

Non-contact dispensing of 500 nL to 200 µL per well. Up to four different reagents can be dispensed precisely and quickly into 96, 384 and (optional) 1536 well plates. The patented droplet generator technology ensures excellent performance with a wide range of reagents, buffers, solvents and cell suspensions. Available as a stand-alone system or as a space-saving integration with CyBio multichannel pipettors.

Dispensing heads:	Two or four 8- or 16-channel dispensing heads; Option for optimal cell dispensing
Number of reagents:	up to 4 different reagents
Volume range:	500 nL to 200 µL
Precision*:	CV < 5% at 3 µL (standard 8-channel dispensing heads)
Dimensions (w/h/d):	ca. 260 x 850 x 700 mm (as add-on for CyBi®-Well) ca. 930 x 900 x 700 mm (stand-alone, one stacker) reduced height possible on request
Compressed air:	CyBi®-Drop 3D requires compressed air (4-5 bar)

Readers

Specifications



CyBi®-Lumax flash HT and HS

High throughput flash luminescence reader for photoprotein-based calcium mobilization assays such as GPCR and Calcium Channel assays. The unique Cell Flash Technology enables superior data quality and straightforward assay protocols. Excellent sensitivity through single photon counting intensified CCD camera and ultra-sensitive optics. Ideal for low volume assays reducing cell and compound consumption.

High Throughput (HT):	Two 16-channel non-contact cell dispensers
Plate formats:	96-, 384- and 1536-well microplates
Detection limit:	0.3 pg / well Aequorin
Reading time:	1.0 minutes per 384-well plate
High Sensitivity (HS):	Two 8-channel non-contact cell dispensers
Plate formats:	384- and 1536-well microplates
Detection limit:	60 fg / well Aequorin
Reading time:	5.5 minutes per 384-well plate
Dimensions (w/h/d):	572 x 781 x 622 mm (without table and camera unit)
Weight:	ca. 70 kg (CyBi®-Lumax flash HT) ca. 77 kg (CyBi®-Lumax flash HS)

Barcode Labelers

Specifications

CyBi®-Print vario

A highly reliable and fast barcode print and apply workstation. All common types of barcodes and additional plain text can be printed on the labels. The short and the long side of microplates can be labeled. Expandable stacker capacity enables unattended processing of up to 300 plates. The flexible software provides ActiveX scripting and database interface.

Plate types:	All SBS-format plates, tube and tip boxes, if stackable (minimum height of labels is 5.5 mm)
Plate sides:	Long and/or short side can be labeled
Barcode types:	All common types such as code 39, code 93, code 128, interleaved 2/5 and more
Speed:	15 seconds per microplate, 40 microplates in 10 minutes (first stacker, one label /plate)
Labels:	66.0 x 5.5 mm or 66.0 x 7.0 mm (W x H) resistant to DMSO, methanol and other solvents, -40°C to +150°C
Dimensions (w/h/d):	1560 x 926 x 510 mm (system with one standard stacker)
Weight:	ca. 70 kg (system with one standard stacker)
Compressed air:	Requires compressed air (5.5 bar)



Software

Requirements

CyBio® Composer

The CyBio® Composer software is CyBio's platform for every aspect of controlling CyBio's instruments and system integrations. An application-oriented graphical user interface, a powerful script writing module, and a flexible integration module leaves nothing lacking in order

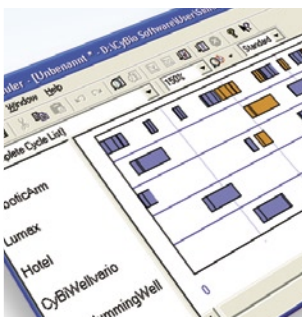
Operating system:	Windows XP with Service Pack 2
Additional software:	Microsoft Internet Explorer 6.0, Microsoft Data Access Components 2.8
Hard drive:	120 MB
Monitor resolution:	1024 x 768 pixel
RAM:	256 MB



CyBio® Scheduler

The CyBio® Scheduler software is CyBio's platform for controlling more complex automated assays in a parallelized and optimized manner. An automatically teach-in function, different scheduling options, assay interleaving as well as sophisticated error handling, are some of the key features of this software.

Operating system:	Windows XP with Service Pack 2
Additional software:	Microsoft Internet Explorer 6.0, Microsoft Data Access Components 2.8
Hard drive:	120 MB
Monitor resolution:	1024 x 768 pixel
RAM:	256 MB



Workstations

Specifications

CyBi®-CrystalCreator

The right choice for automation of protein crystallisation protocols (sitting-drop, hanging-drop and microbatch). Precise and fast pipetting down to 100 nL enables automation of the entire protein crystallization process (Screening to Optimization to Scale-up). The user-friendly CyBi®-CrystalCreator Studio software provides fast and easy launch of predefined protein crystallization programs.

Automated Pipettors:	96- and 8-channel (disposable tip)
Volume range:	0.1 µL - 25 µL
Precision*:	96: CV < 10% 8: CV < 10%
Dimensions (w/h/d):	1000 x 650 x 1000 mm
Weight:	70 kg

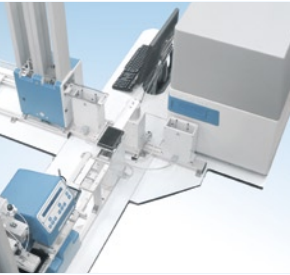




CyBi®-Genomics Workstation

The CyBi®-Genomics Workstations M and VM enable fully automated purification of nucleic acids, recombinant proteins and metabolites with magnetic beads or vacuum-based technologies. These modular workstations are built around a 10-position turntable and may be combined with other CyBio devices to meet your laboratory needs.

Pipetting channels:	Type M: 96- or 384-channel pipetting heads Type VM: 96-channel pipetting head
Volume range:	384 head: 200 nL – 25 µL 96 head: 2 µL– 250 µL
Precision*:	250 µL fixed pipetting heads: 10-25µL ≤ 2% 25-250µL ≤ 1%
Dimensions (w/h/d):	CyBi®-Genomics Workstation VM: 1300 /850/1000 mm Including base plate CyBi®-Genomics Workstation M: 700 /650/950 mm



CyBi®-Cellight

The platform for bioluminescence screening combines the operator convenience of traditional workstations with the scalability of conventional fully integrated robotic system plus CyBio's well known reliability. Three off-the-shelf packages are available.



CyBi®-Replicator

The liquid handling core of the CyBi®-Replicator is the 10-position deck of the CyBi®-Disk with two pipetting heads. An integrated rotating arm, stackers and software tools for parallel processing form a high throughput compound management platform for plate replicating and plate reformatting.



CyBi®-Screen-machine

The flexible concept of the CyBi®-Screen-machine enables high and ultra high throughput screening of biochemical and cell-based assays. A patented transport system connects liquid handling units, stackers, incubators and fluorescence or luminescence readers.

CyBio AG

Goeschwitzer Strasse 40

07745 Jena

Germany

Tel +49.3641.351 0

Fax +49.3641.351 409

info@cybio-ag.com

www.cybio-ag.com

CyBio US, Inc.

500 West Cummings Park

Suite 1800

Woburn, MA 01801, USA

Tel +1.781.3 76 98 99

Fax +1.781.3 76 98 97

CyBio Northern Europe Ltd.

The Beater House, Turkey Mill

Ashford Road, Maidstone

Kent ME 14 5PP, UK

Tel +44.16 22 66 21 18

Fax +44.16 22 66 41 57

CyBio Japan K.K.

4F, Meiji Yasuda Seimei Radio Nippon Bldg.

85 Choja-Machi, 5-chome, Naka-ku

Yokohama City, Kanagawa, 231-0033 Japan

Tel +81.45 2 50 62 50

Fax +81.45 2 62 33 15