

New

QuickGene-610L

Personal Genome Extraction System



Smart Purification Tool for Genetic Analysis

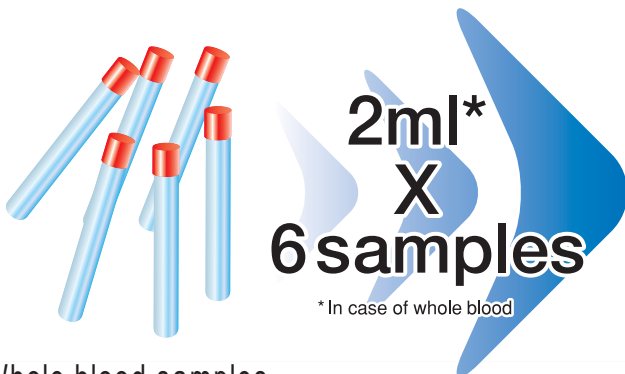
The QuickGene-610L can perform DNA extraction of 6 whole blood samples simultaneously. High throughput in routine analytical work on demand.

FUJIFILM's QuickGene-610L Personal Genome Extraction System is semi-automated.

STEP 1: Large-scale Analysis

- 1** Process valuable samples simultaneously
- To obtain sufficient volume of DNA samples from whole blood efficiently is critical for further genome analyses. QuickGene-610L has the capacity to process 6 samples of 2 ml each simultaneously at your convenience. This unit can prepare large volumes of samples in shorter time with reproducible results.

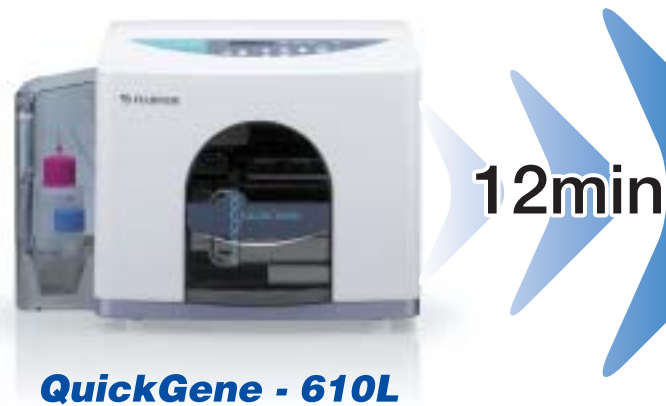
Sample



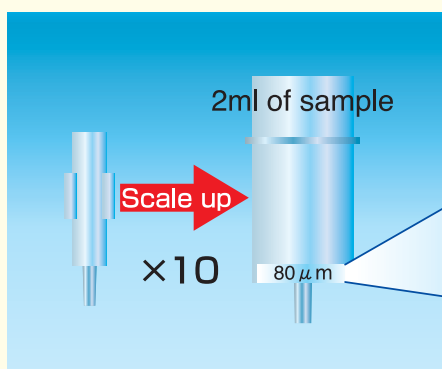
STEP 2: Quick Extraction

- 2** 6 samples within 12 min
- QuickGene-610L employs FUJIFILM's proprietary porous membrane for the separation. The membrane is made of an ultra-thin 80µm-thick polymer, which enables quick purification from larger volume samples under low pressure. Two milliliters of whole blood samples can be processed in 12 minutes to yield the DNA samples from whole blood lysate, when a sample is pre-treated with a QuickGene Isolation Kit.

Extract

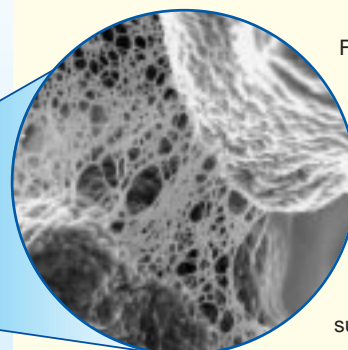


Scale up for Genetic Research Studies



A novel cartridge of QuickGene-610L enables the processing of a large volume of samples, ten times (x10) more than QuickGene-810 cartridges, for nucleic acid extraction.

Revolutionary Porous Membrane



FUJIFILM's proprietary 80µm-thick porous membrane of the cartridge effectively absorbs nucleic acids in hydrophobic solvents, separating from proteins and lipids. This revolutionary membrane has been brought about by the successful integration of FUJIFILM's technologies in photographic films and printing accumulated over many years. The integration achieves stable and reproducible membrane separation-extraction performance.

Genomic DNA Analysis Research

Good samples (2ml each), within 12 min.

For research use only

Optimized, optimized for genetic analyses of blood samples.

STEP 3: Quality Evaluation

- 3 Mild extraction provides DNAs of higher quality, fewer cleavage.

The high quality of purified DNA samples is critical to successful research studies. Especially in the case of studies involving many genetic markers, high-purity, fewer-cleaved, and ample DNA samples are required. QuickGene-610L yields DNA samples under gentle extraction method, not by conventional centrifuge process, resulting in higher yields of DNA with higher molecular weight, fewer cleavages, and high purity.

Analysis

STEP 4: No Separate Purification Process

- 4 The DNA samples are suitable for downstream genetic analyses.

DNA samples isolated by QuickGene-610L require no further purification process. Then extracted DNA can be directly applied to genetic analyses including PCR, SNP validation. In other words, it simplifies the routine analytical work flow, and results in high throughput processes.

Results

Fewer-cleaved, High-purity Genomic DNA 50 μ g*

*Yield may vary according to samples.

PCR

DNA Sequencer

Real Time PCR

DNA Microarrays

Sequencing

Genotyping

SNP Validation

Genetic Analysis

Linkage Analysis

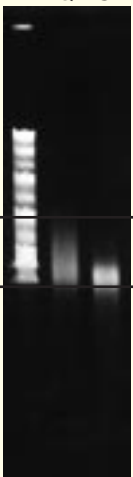
Cancer Research

Genetic Disease

HLA Typing

Longer DNA Samples

M Q S



97 kbp

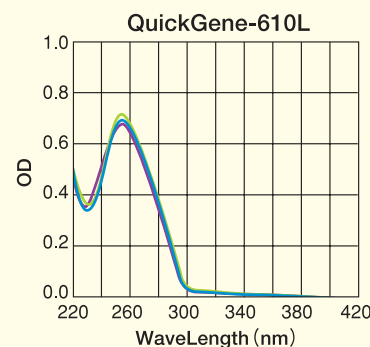
24.5 kbp

DNA extracted by QuickGene has remarkable lengths of 97 kbp through its gentle separation process under low pressure conditions.

Traditional spin-column extraction method with a centrifuge has been known to yield shorter DNA fragments than QuickGene due to the cleavage of DNA molecules.

M: Midrange PFG maker II
Q: QuickGene-610L
S: Spin Column

High-purity



A spectrum of DNA sample purified by QuickGene-610L

DNA samples obtained by QuickGene-610L is of such high quality that the purification process is not required to remove proteins and chaotropic salts and can be directly submitted to analysis such as PCR, etc.

Specifications of QuickGene-610L

Overview

Automated stages: Sample binding, washing, and elution
Throughput: 1 to 6 samples per run
Display: LCD (16 characters x 1 line)

Operating conditions

Supply voltage: 100 ~ 240V
Power supply frequency: 50/60Hz
Operating conditions: Temperature: 15 - 30
Humidity: 30-80% (non-condensing)
Power consumption: 100W

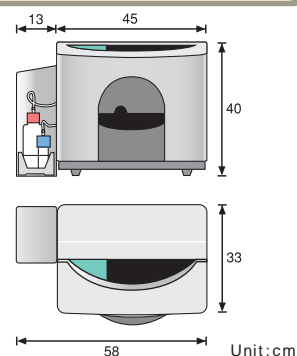
For research use only

Physical specifications

Dimensions: 45(W) x 30(D) x 40(H) cm
Weight: approx. 24kg

Isolation kit

QuickGene DNA whole blood kit (for 48 samples)



Isolation Kits for QuickGene-610L

QuickGene DNA whole blood kit L

QuickGene Isolation kit (for 48 samples) contains all reagents and tubes necessary for DNA extraction from whole blood in a single package.

	QuickGene Isolation kit (for 48 samples)
	QuickGene DNA whole blood kit L
	Reference code DB-L
Pretreatment enzyme	○
Lysis buffer	○
Wash buffer	○
Elution buffer	○
Cartridges	○
Waste tubes	○
Extraction amount	ca. 50µg/whole blood 2ml



Application Guides >>>> <http://lifescience.fujifilm.com>

The Application Guides of QuickGene series are available in PDF format for download:

- No. 1. [This Application Guide has been discarded due to outdated protocol.]
- No. 2. Isolation of Genomic DNA from Human Whole Blood
- No. 3. Total RNA Isolation from Human Cultured Cell, HEK293
- No. 4. Genomic DNA Isolation from Mammalian Tissue
- No. 5. Genomic DNA Isolation from Human Cultured Cell Line
- No. 6. Genomic DNA Isolation from Mouse Sperm
- No. 7. Viral RNA Isolation from Simian Immunodeficiency Virus (SIV) Infected Cells
- No. 8. Viral DNA Isolation from Simian Immunodeficiency Virus (SIV) Infected Cells
- No. 9. Total RNA Isolation from Mouse Liver
- No.10. Plasmid DNA isolation from E. coli
- No.11. [This guide is for the revised version of Japanese Application Guide #1. Not available in English.]
- No.12. Total RNA Isolation from Monocotyledon and Dicotyledonous Plant Tissues
- No.13. DNA Isolation from Branchia of Koi Herpes Virus(KHV) Infected Fish
- No.14. Total RNA Isolation from Cultured Adherent Cells
- No.15. Total RNA Isolation from Various Mouse Normal Tissues
- No.16. Genomic DNA Isolation from Nail
- No.17. Genomic DNA Isolation from Dental Pulp and Hard Tissues (Teeth and Bones)



Fuji Photo Film Co., Ltd. 26-30, Nishiazabu 2-Chome, Minato-ku, TOKYO 106-8620, JAPAN, Tel: +81-3-3406-2201, Fax: +81-3-3406-2158 • E-mail: sginfo@fujifilm.co.jp

Fuji Photo Film (Europe) GmbH Heesenstr. 31, 40549 Dusseldorf, Germany, Tel: +49-211-5089-174, Fax: +49-211-5089-139 • E-mail: lifescience@fujifilmneurope.de

Fuji Photo Film (U.K) Ltd. Unit 12 St Martins way, St Martins Business centre, Bedford, MK42 0LF, U.K, Tel: +44-1234-245291, Fax: +44-1234-245293 • E-mail: lifesciences@fujifilm.co.uk

Fuji Photo Film (China) Investment Co., Ltd. 31st floor, Hong Kong New World Tower, No.300 Huai Hai Zhong Road, Shanghai, P.R China, Tel: +86-21-3302-4655 ext.363, Fax: +86-21-6384-3322 • E-mail: wgxiang@fujifilm.com.cn

<http://lifescience.fujifilm.com>

Specifications and system configuration subject to change for improvement without notice. All other product names mentioned herein are the trademarks of their respective owners.

